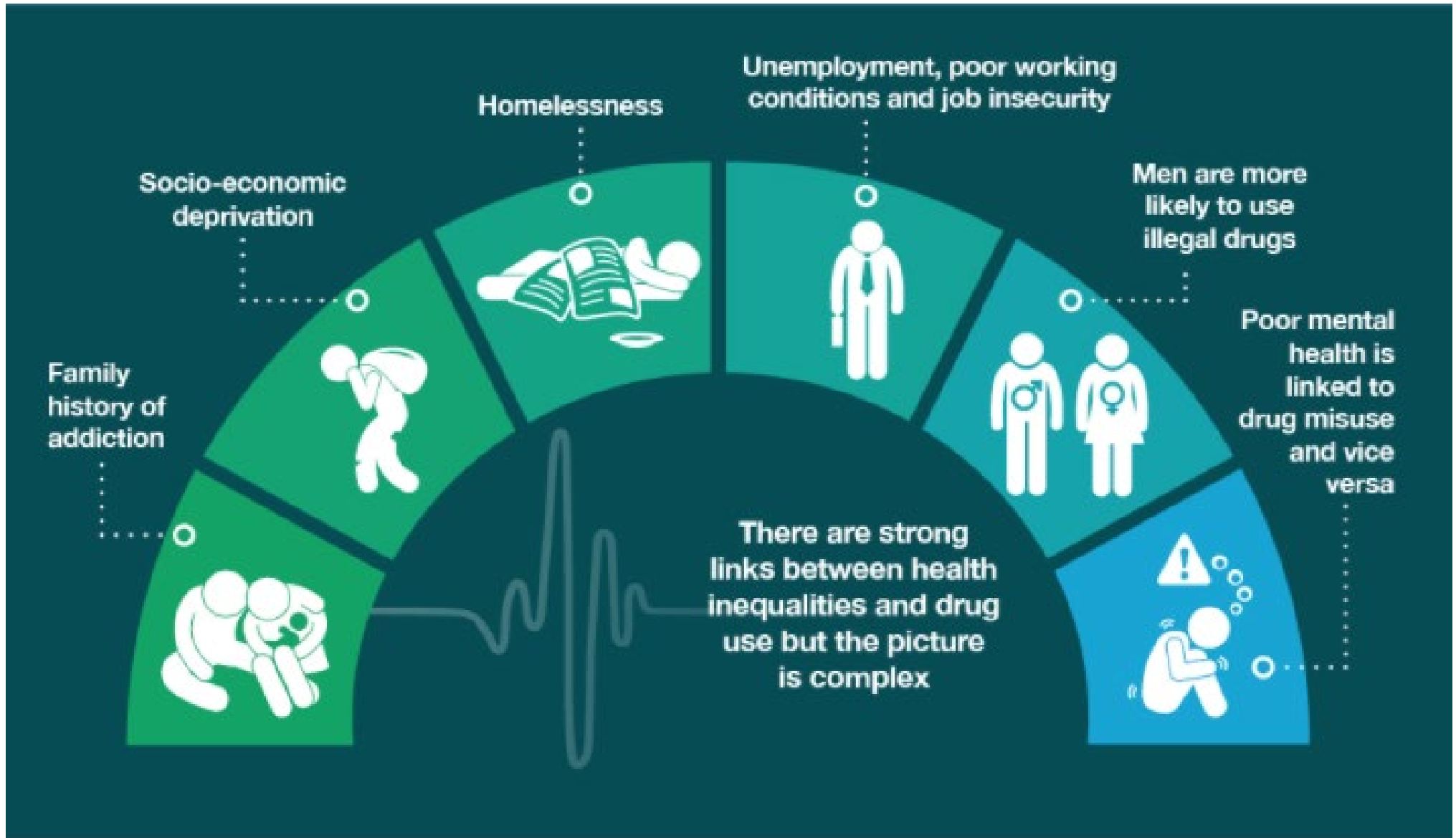


Substance misuse in Bury

Jon Hobday – Consultant in Public Health

- Substance misuse major PH issue
- Poor health, early death, unemployment, deprivation, homelessness, family breakdown, criminal activity,
- Strong links between inequalities and substance misuse
- Dame Carol review (phase 2) Leadership, funding, commissioning and rebuilding



The Bury situation

Alcohol

- Alcohol related mortality – remained stable (42 per 100,000) – *similar to England*
- Admission episodes for alcohol related conditions – remained stable (470 per 100,000) – *better than England*
- 78.8% of dependent drinkers not in service – *better than England*

Drugs

- Decreasing number of drug related deaths (13 deaths 2020 – 8.8 per 100,000) – *worse than England but better than the North West*
- Decrease in numbers in service (apart from opiate service users)

Bury's approach to addressing substance misuse

- Key focus on prevention
- Strong substance misuse service (all age)
- Wider recovery support
- Substance misuse delivery partnership
- Substance misuse action plan
- Focus on inequalities
- Collaborative working with GM
- Link with CSP, Community hubs and wider strategies